



Thwaite Close, Great Oakley, Corby

**STUART
CHARLES**
ESTATE AGENTS

£230,000

Occupying an enviable position on the edge of the highly regarded village of Great Oakley, this impressive four-bedroom semi-detached home offers spacious and versatile accommodation arranged over three floors, making it perfectly suited to modern family living.

Beautifully presented throughout, the property combines contemporary styling with practical living spaces, creating a home that is both comfortable and functional. The ground floor welcomes you with an inviting entrance hall leading through to a stylish fitted kitchen/dining room, thoughtfully designed to provide the ideal setting for everyday family life as well as entertaining guests. Offering ample storage, generous worktop space, and room for dining, this sociable area forms the heart of the home.

The first floor features a spacious and light-filled living room, providing an excellent space to relax and unwind. Also located on this level is the fourth bedroom, offering flexibility as a guest room, home office, or playroom depending on individual requirements.

To the second floor, there are three further well-proportioned bedrooms, including an impressive principal bedroom benefitting from its own en-suite shower room. A modern family bathroom serves the remaining bedrooms and completes the accommodation.

Externally, the property continues to impress with a driveway providing off-road parking and access to the integral garage, offering excellent storage and additional practicality.

- NO CHAIN
- LOUNGE WITH JULIETTE BALCONY
- EN-SUITE TO MASTER BEDROOM
- OFF ROAD PARKING AND GARAGE
- CLOSE TO RESTUARANTS
- KITCHEN/DINER
- FOUR BEDROOMS
- THREE PIECE FAMILY BATHROOM AND TW GUEST W.C'S
- A SHORT WALK TO SHOPS
- CLOSE TO GREEN SPACE

Entrance Hall

Entered via a double glazed door, radiator, stairs rising to first floor landing, doors to:

W.C

Fitted to comprise a two piece suite consisting of low level pedestal, low level wash hand basin, radiator.

Kitchen/Diner

14'9 x 12'6 (4.50m x 3.81m)

Fitted to comprise a range of base and eye level units with a single sink and drainer, gas hob with extractor, electric oven, space for automatic dryer and space for dishwasher, double glazed French doors to rear elevation, double glazed window to rear elevation, radiator.







First Floor Landing

Stairs rising from ground floor, storage cupboard, doors to:

Bedroom Three

12'7 x 8'1 (3.84m x 2.46m)

Double glazed window to front elevation, radiator.

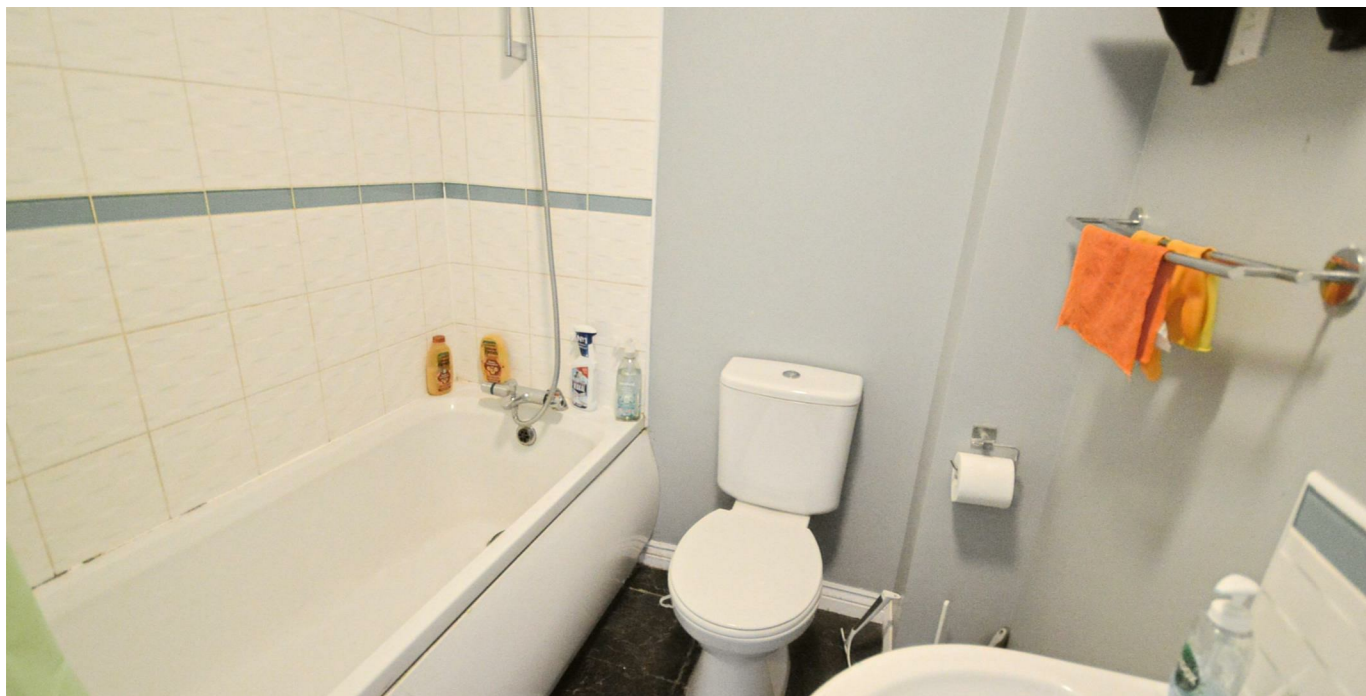
Lounge

14'9 x 13'5 (4.50m x 4.09m)

Double glazed window and French doors with Juliette balcony, radiator, Tv point, telephone point.

W.C

Fitted to comprise a two piece suite consisting of a low level pedestal, low level wash hand basin.



Second Floor Landing

Stairs rising from first floor, doors to:

Bedroom One

12'7 x 10'6 (3.84m x 3.20m)

Double glazed window to front elevation, radiator,
door to:

En-Suite

6'6 x 6'2 (1.98m x 1.88m)

Fitted to comprise a three piece suite consisting of
mains feed shower cubicle, low level pedestal, low
level wash hand basin, extractor,

Bedroom Two

13'5 x 8'7 (4.09m x 2.62m)

Double glazed window to rear elevation, radiator.

Bedroom Four

10'0 x 6'2 (3.05m x 1.88m)

Double glazed window to rear elevation, radiator.

Bathroom

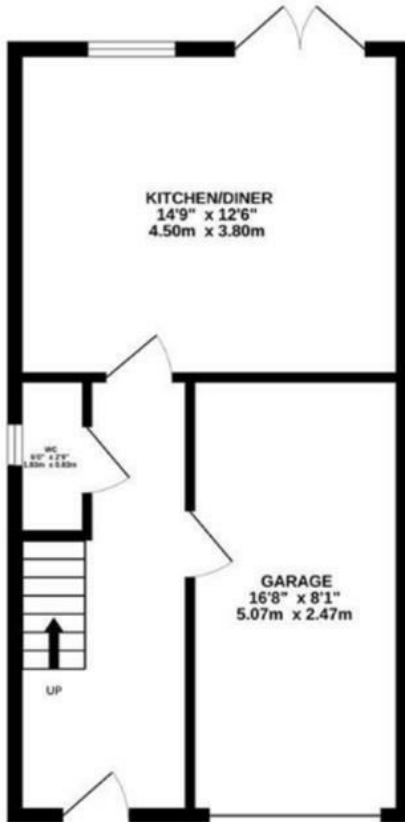
7'4 x 5'6 (2.24m x 1.68m)

Fitted to comprise a three piece suite consisting of a panel bath, low level wash hand basin, low level pedestal, radiator, extractor fan.

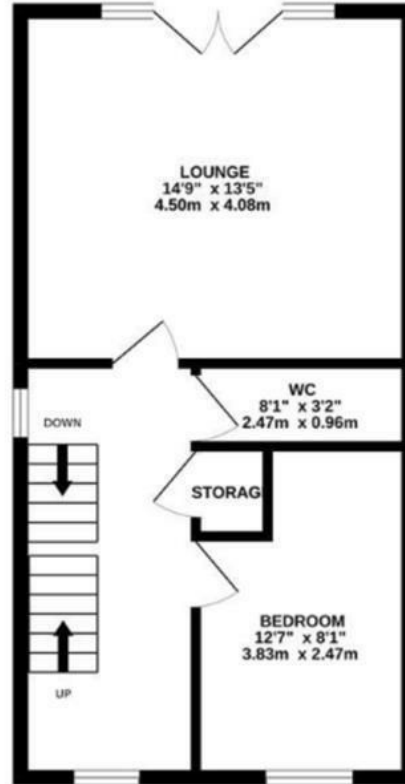
Outside

Front: A driveway provides off road parking and leads

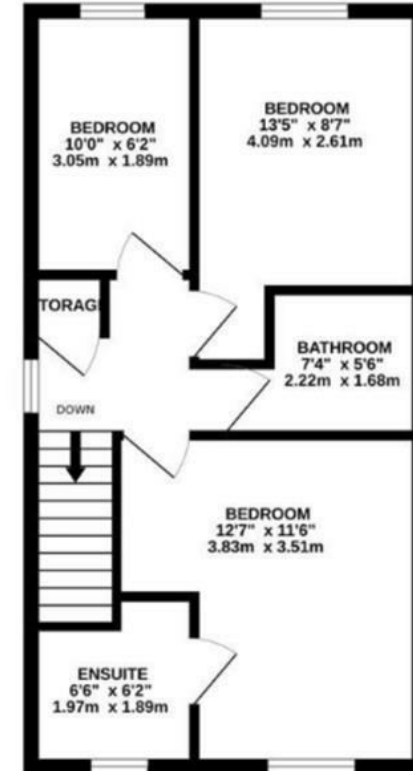
GROUND FLOOR
430 sq.ft. (39.9 sq.m.) approx.



1ST FLOOR
430 sq.ft. (39.9 sq.m.) approx.



2ND FLOOR
424 sq.ft. (39.4 sq.m.) approx.



TOTAL FLOOR AREA : 1283 sq.ft. (119.2 sq.m.) approx.

Whilst every attempt has been made to ensure the accuracy of the floorplan contained here, measurements of doors, windows, rooms and any other items are approximate and no responsibility is taken for any error, omission or mis-statement. This plan is for illustrative purposes only and should be used as such by any prospective purchaser. The services, systems and appliances shown have not been tested and no guarantee as to their operability or efficiency can be given.

to a garage.

Garage: With up and over door,
pedestrian door to hallway.

Rear:

